

The Halesworth

2 Bedroom Semi-Detached House



Plots

55 & 59

The Halesworth is a well designed two-bedroom semi-detached home. The ground floor features a modern kitchen/dining room and a spacious living room. Upstairs the landing leads to two double bedrooms and a family bathroom.

Ground floor

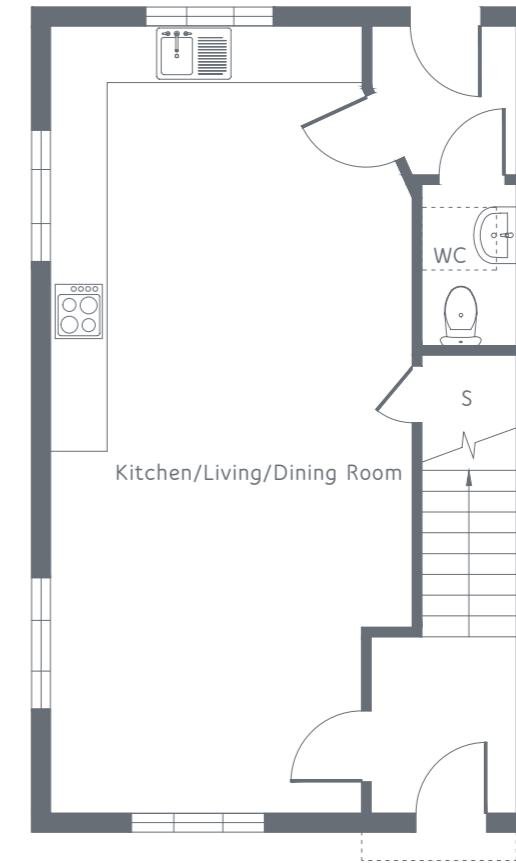
Kitchen/Living/Dining Room 8.08M X 3.60M 26'6" X 11'9"

First floor

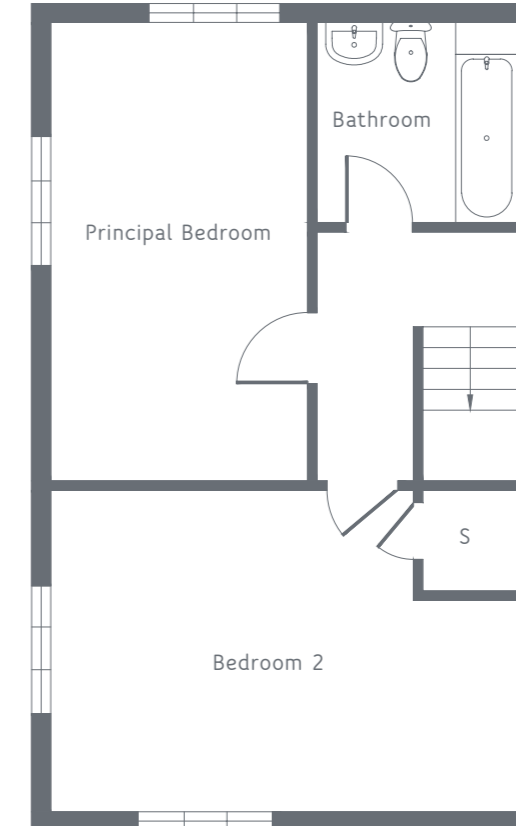
Principal Bedroom 4.62M X 2.56M 15'1" X 8'4"

Bedroom 2 3.36M X 4.80M 11'0" X 15'8"

Bathroom 1.92M X 2.09M 6'3" X 6'10"



Ground floor



First floor

Total Floor Space: 77.6sqm | 836sqft

Floor plans and computer generated images are indicative only and external finishes may vary. Please refer to the drawings in the Marketing Suite. Dimensions shown may vary within a tolerance of + / - 50mm and are not intended to be used for carpet sizes, appliance sizes or items of furniture. Floor plans are not shown to scale.

Shared ownership