

The Brooke

3 Bedroom Semi-Detached House



Plots

57 & 58

The Brooke makes the most of space, in this stylish three-bedroom semi-detached home. The ground floor accommodation comprises a modern kitchen, and a spacious living/dining room with double doors leading out to the garden and patio area. Upstairs there are three double bedrooms, and a family bathroom.

Ground floor

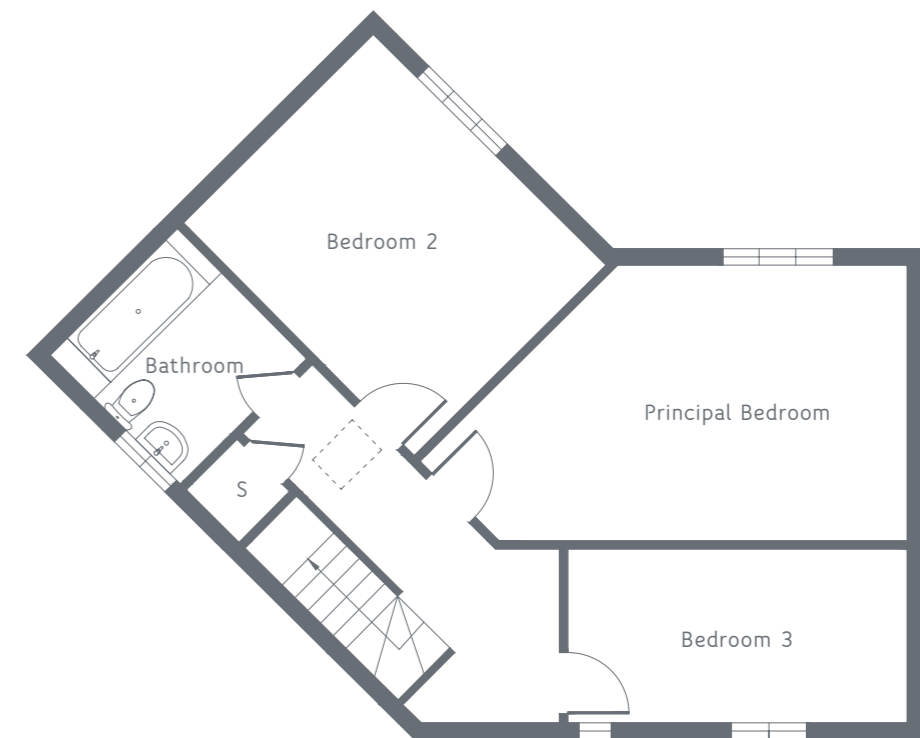
Living/Dining Room	5.15M X 6.20M*	16'10" X 20'4"
Kitchen	2.85M X 3.16M	9'4" X 10'4"

First floor

Principal Bedroom	3.01M X 4.25M*	9'10" X 13'11"
Bedroom 2	2.93M X 4.03M	9'7" X 13'2"
Bedroom 3	2.02M X 3.75M	6'7" X 12'3"
Bathroom	2.07M X 2.17M	6'9" X 7'1"



Ground floor



First floor

Total Floor Space: 97sqm | 1044sqft

Floor plans and computer generated images are indicative only and external finishes may vary. Please refer to the drawings in the Marketing Suite. Dimensions shown may vary within a tolerance of + / - 50mm and are not intended to be used for carpet sizes, appliance sizes or items of furniture. Floor plans are not shown to scale.

Shared ownership